

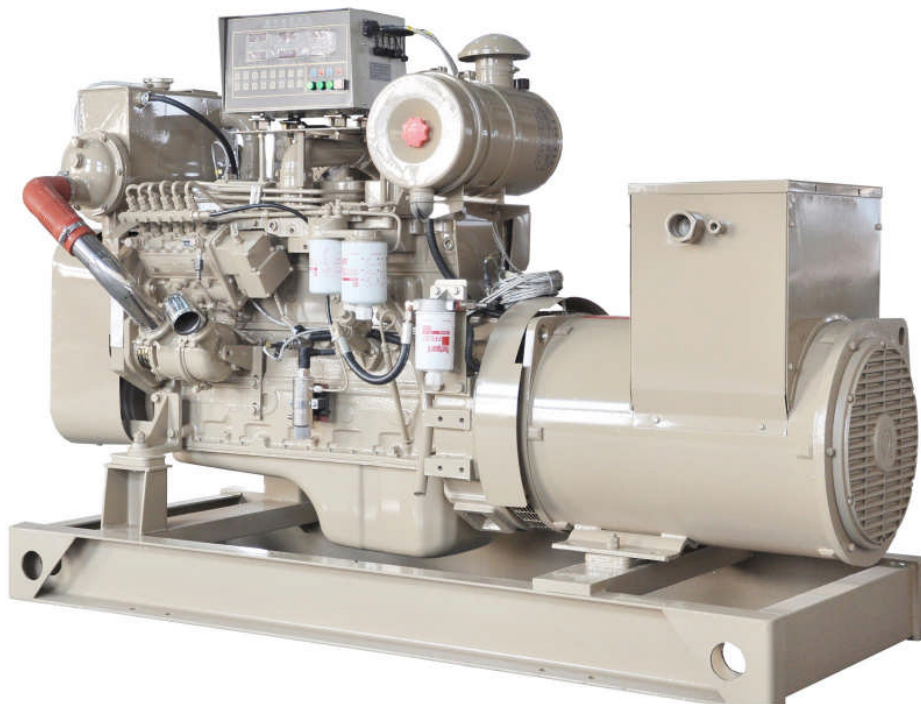
ETONE

Etone Power Co.,Ltd.

<http://www.etonpower.com>

Model : ETCJC90

Generating set Technical Data Sheet



NO:JGC2010

© 2010 Taizhou Fengde Mechanical&Electrical Manufacturing Co.,Ltd.

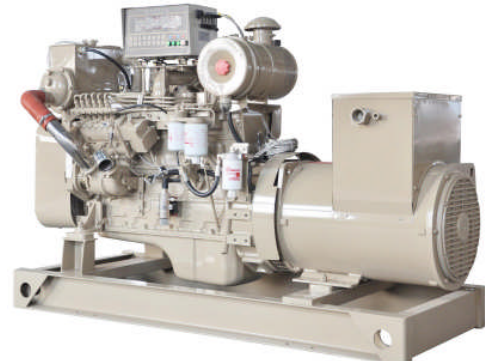
ISO9001:2008

CE

STANDARD SPECIFICATION

General features:

- Coupled with Cummins diesel engine and Marathon alternator
- 24V DC start motor
- Brushless, Self-excited, IP23, insulation class H alternator



Genset Main Technical Data

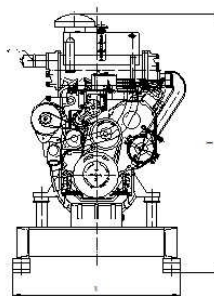
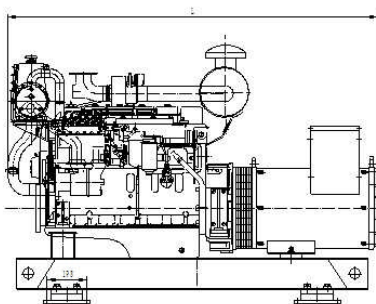
3-PH, 50Hz@1500RPM, 400/230V (Also Can Be Made According To Customers' Special Requirements)

Voltage	HZ	Phase	P.F ($\cos \phi$)	Output (KW)
400/230V	50	3	0.8	90

Criterion

- GB/T13032-1991
- ISO9001:2008 Quality Control System
- CCS approved

Dimension and Weight



Open Type

Overall size (L*W*H)

1900x850x1400

Weight:1350kg

ENGINE SPECIFICATION

Cummins Diesel Engine

Technical Data

Engine Model	6CT8.3-GM115
Number of Cylinders	6 cylinders in line
Cycle	4 stroke

Aspiration	Turbocharged
Bore×Stroke	114x 135 mm
Displacement	8.3 L
Prime Power/Speed	115KW /1500rpm
Speed Governor	electrical
Cooling System	By heat exchanger
Fuel Consumption at 100% Load	212 g/kw.h
Starter Motor	DC24V,

Alternator SPECIFICATION

Marathon Alternator (Standard)

Technical Data

Alternator Model	MP-H-90-4
Prime power	90KW
Frequency/speed	50HZ/1500rpm
Exciter type	Brushless, Self-excited
Power factor	0.8
Insulation Grade	H
Protection Grade	IP23
Phase / wire	3 phase 4 wires

Control System

Model	MFKC200AG
<ul style="list-style-type: none"> * Microcomputer digital control, and reliable work; * Digital display of parameters of diesel engine, and integration of measuring and monitoring; * Modularization of functional configuration, and ntegration of product structures; * Resistance to vibration, humidity, salt mist and high/low temperature; * Powerful ability to resist interference, convenient installation and use, and high performance-price ratio; * Remote monitoring of running parameters; * Automatic zero set of lubricating oil pressure * Accumulation of running period of diesel engine. 	
	

Supply documents

<p>a. Alternator operation and maintenance manual CCS certificate</p>	<p>1PC 1PC</p>
<p>b. Engine operation and maintenance manual CCS certificate IMO certificate</p>	<p>1PC 1PC 1PC</p>
<p>c. Generator CCS certificate Overall drawings of the set ELECTRONIC SYSTEM DRAWING Bench test Packing list</p>	<p>1PC 1PC 1PC 1PC 1PC</p>
<p>d. Control panel CCS certificate operation and maintenance manual</p>	<p>1PC 1PC</p>

Picture of packing



Etone Power Co.,Ltd.